

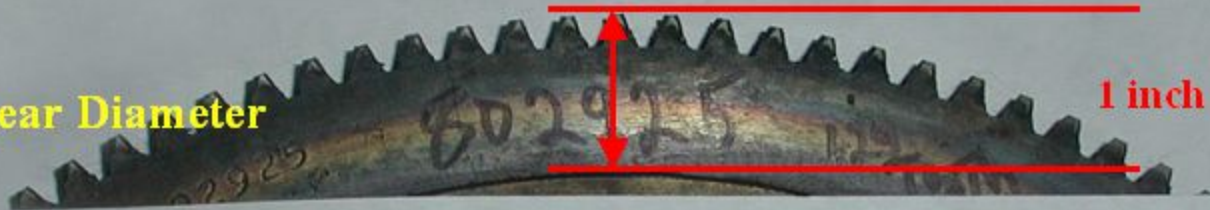
# Flywheel Starter Ring Gear Comparison: Willys Jeeps

CJ3A Late: uses 6 volt starter MCH6203  
M38 Late & M38A1: uses 24 volt starter (MCZ4001UT)  
CJ3B & CJ5/6: uses MCH6203, 6207, & MCH6215 6 volt starters  
& MDM6005 or MDU7004 12 volt starters

Note: that ring gear inside diameters are the same for all flywheels listed

802925  
129 Tooth Gear

Outside ring gear Diameter  
13 inches



CJ3A Early: uses 6 volt starters (MZ4137 & MZ4162)  
M38 Early: uses 24 volt starter  
MBP4301UT

641955  
124 Tooth Gear

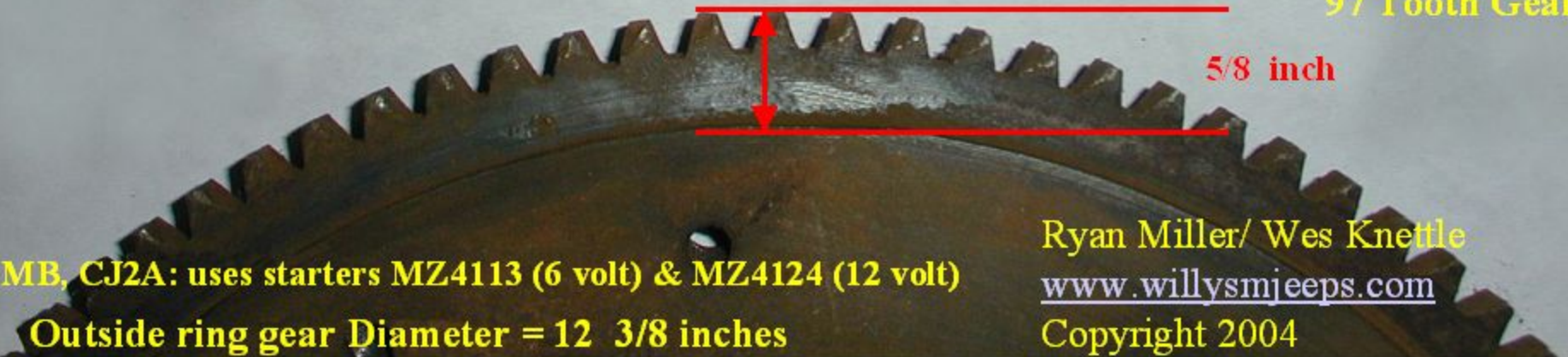
Outside ring gear Diameter = 12 1/2 inches



635394  
97 Tooth Gear

MB, CJ2A: uses starters MZ4113 (6 volt) & MZ4124 (12 volt)  
Outside ring gear Diameter = 12 3/8 inches

5/8 inch



Ryan Miller/ Wes Knettle  
[www.willysmjeeps.com](http://www.willysmjeeps.com)  
Copyright 2004